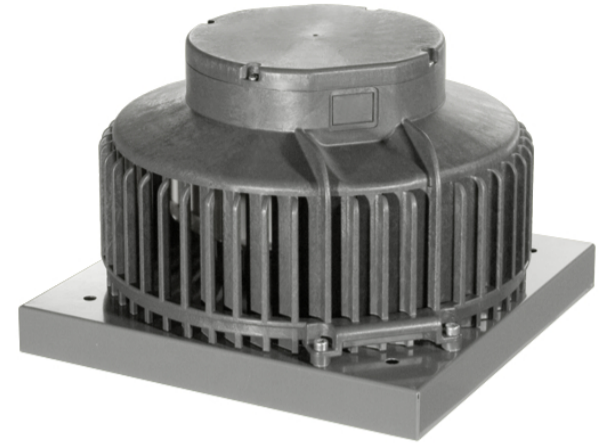
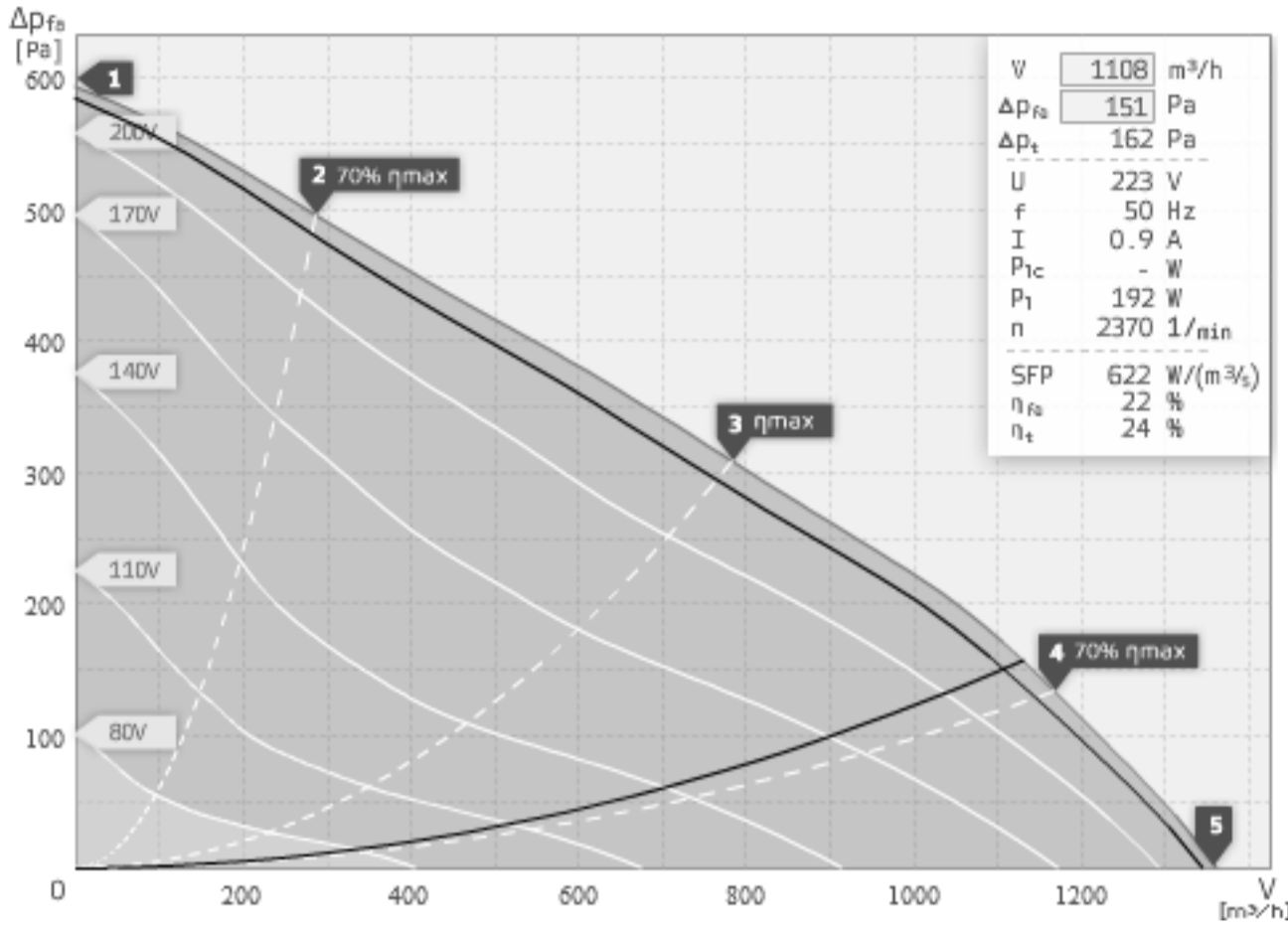


DATE TEHNICE PRELIMINARE

DHA 250 E2 01 | 123010

ruck.eu
VENTILATOREN



- Ventilator centrifugal cu palete orientate inapoi
- plastic rezistent ASA, RAL 7012
- turatie reglabila
- termocontact integrat
- lagaruire ce nu necesita service

punct de functionare		1	2	3	4	5
curent I	A	0,7	0,8	0,9	0,9	0,8
consum de putere P1	W	152	181	212	194	175
turatie n	1/min	2664	2507	2319	2442	2555
put. fonica aspiratie LWA5	dB(A)	77	75	75	77	78
put. fonica refulare LWA6	dB(A)	83	81	81	83	84
put. fonica radiatie LWA2	dB(A)	-	-	-	-	-

putere fonica (LW) dB(A)		banda frecventa medie								
		Σ	63	125	250	500	1k	2k	4k	8k
aspiratie	LWA5	76	35	48	60	66	70	71	70	69
refulare	LWA6	82	69	48	61	73	78	78	73	70
Radiatie	LWA2	-	-	-	-	-	-	-	-	-

DHA 250 E2 01 123010	
tensiunea UN	230 V 1~
curent I _{max}	1
temperatura ambianta t _A	45 °C
temperatura medie t _M	45 °C
reglaj turatie	V
protectie motor	TAI
clasa de izolare	F
greutate	6 kg

